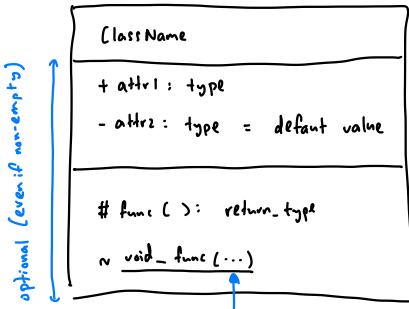


Class Diagrams



- + public
- private
- # protected
- ~ package private (default in Java)

→ typically don't include standard library

optional (even if non-empty)

optional

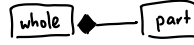
underline class-level attribute/methods
aka static

only need type, not param name

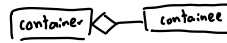
Solid line association

Solid arrow navigability of association
↔ bi-directional navigation

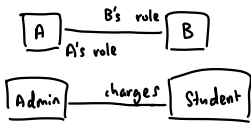
* rmb to use composition



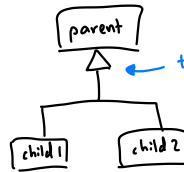
composition



aggregation



roles (optional)

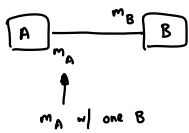


triangle, not arrow

inheritance (extends)



label



multiplicity

0..1	0 to 1
1	1
*	∞
n..m	n to m



interface (implements)

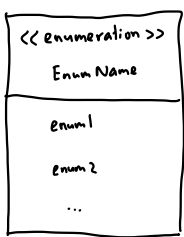
→ interface methods are public abstract
→ interface attributes are public static final



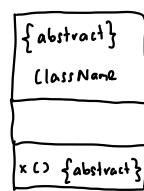
need to implement methods



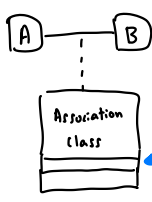
dependency (if not captured by other notation)
→ referring to constants
→ method param/return type



enumeration



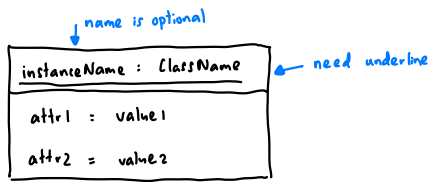
OR use italics



association class

don't include A, B

Object Diagrams



→ no multiplicities (always 1)

→ no methods

→ no inheritance


solid line association

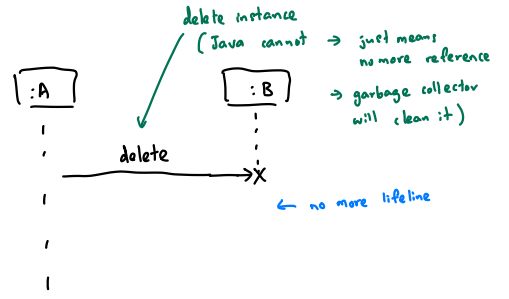
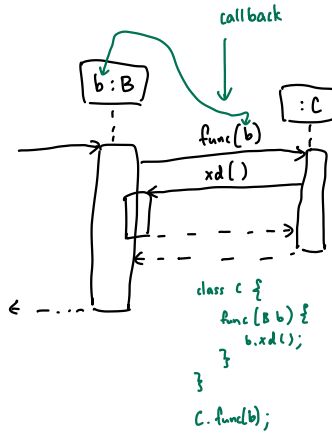
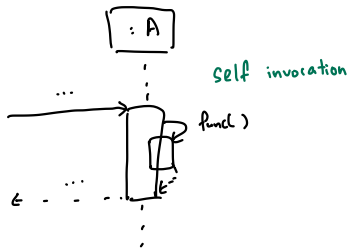
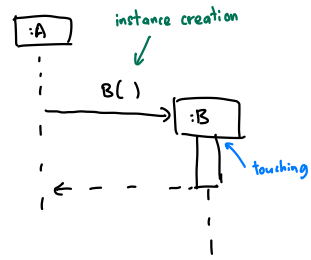
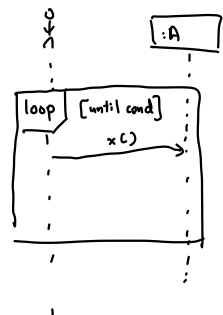
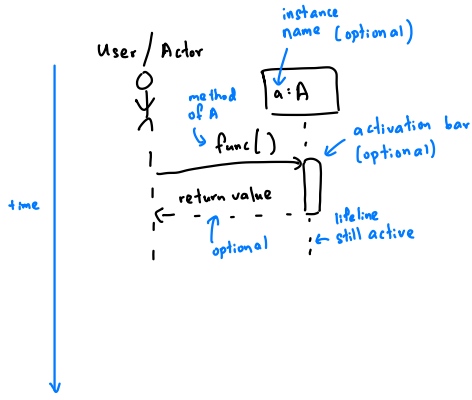
label ▾ labels

↔ navigation

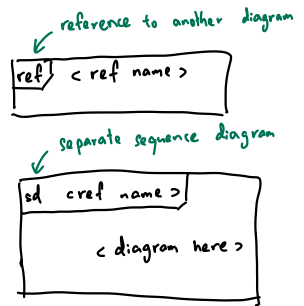
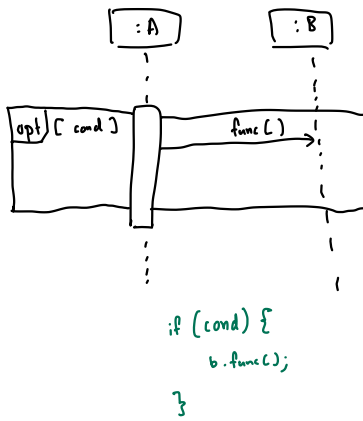
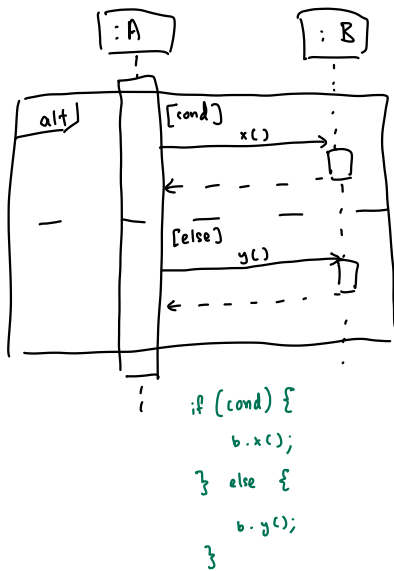
Sequence Diagrams



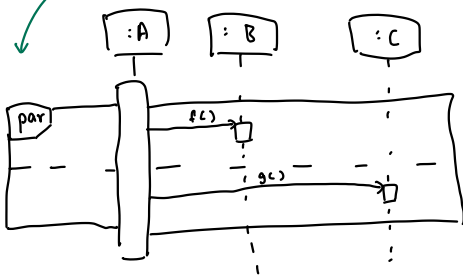
note: for the top-left boxes,  this shape w/ the shaved edge!
 note: if x created before Y, x's lifeline starts before Y



alternative path



parallel paths (concurrency)



OODM

Object-Oriented Domain Models aka Conceptual Class Diagrams

- type of class diagram
- models problem NOT solution
- class structure of problem NOT behaviour

- no navigability
- no methods
- can have attributes (types are optional)

Activity Diagram

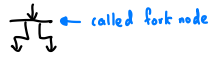


ROUNDED CORNERS

action



start



called fork node

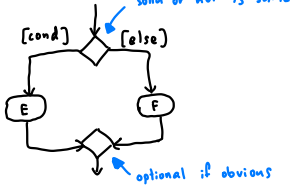
fork (to parallel paths)

only for diff threads



compulsory

join (need ALL parallel paths to complete)

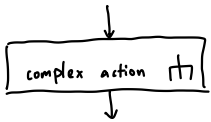


solid or not is same

branch (exactly one path is taken)

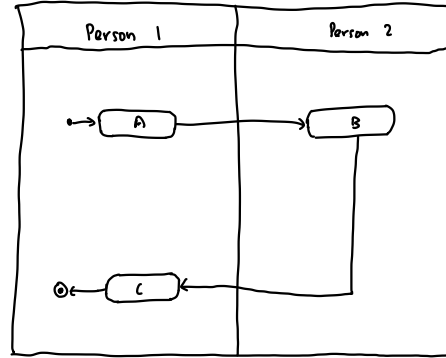
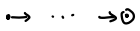


end (can have multiple)



note

Activity: complex action



swim lanes